



> Renewable Energy

TTERRA – ENGENHARIA E AMBIENTE, LDA.

Enterprise presentation services

february, 2014

PRESENTATION



Date of establishment: 18th September, 1991

193 Gil Vicente Street, 1st floor C, 2775-198 Parede,
Portugal

Telephone: (00351) 214 537 349 | (00351) 211 571 771

Fax: 210 134 553

Mobile:(00351) 960 209 403 |(00351) 960 360 954

tp@tterra.pt | mail@tterra.pt

skype: tterra_parede

www.tterra.pt

PRESENTATION

Society's demand for environmental responsibility has become a major issue to deal with social integration challenges.

The main question has always been: "Environment- an asset or a cost?". In our business, we certainly, believe, in the 1st choice. This core value, has guided TTerra's operations for 25 years. In the scope of sustainability, we pursue the best environmental technologies, "integrated technology" to avoid pollution (waste, pollutants and energy waste) during the production phase, and in return, it increases **energy efficiency, job creation, energy and cost savings and environmental know-how. Shortly, the environment is a great value for everyone.**

The connection between human knowledge and the boundaries of the earth, is reflected in TTerra's every step. Our logo represents this connection.

TT of all the earth(Terra), T from Land(Terra), intelligence, resources and limits of the earth in harmony with the resources and limitations of the mind.

We are committed to providing a responsible and intelligent service.

RENEWABLE ENERGY

Why ?

Portugal has a high potential for the development of renewable energies to enhance the security of supply and achieve significant reductions in greenhouse gas emissions.

By 2020 it is expected that the renewable energy sector represents 1.3% of GDP and generate EUR 2, 900 million of gross value added, approximately .

For the same period is also expected a significant reduction in the energy dependence of 83% to nearest 74%.

(<http://dre.pt/pdfgratis/2013/04/07000.pdf>)

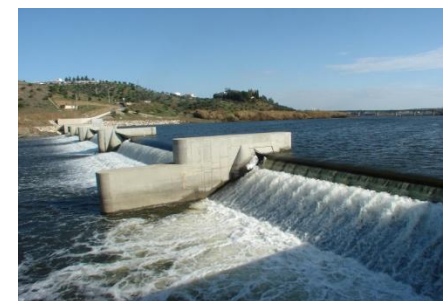
The decentralized nature of renewable energies projects ensures a well-balanced geographical distribution of investments, thus contributing to greater regional and local development



WHAT DO WE DO?

Renewable Energy Source Projects:

- Scoping Plan Proposal;
- Environmental Impact Studies;
- Environmental Incident Studies;
- Environmental Monitoring Sites/Workplace Risk Assessment;
- Obtention of Water Right Permits;
- Conduct of proceedings for the occupation of protected areas;



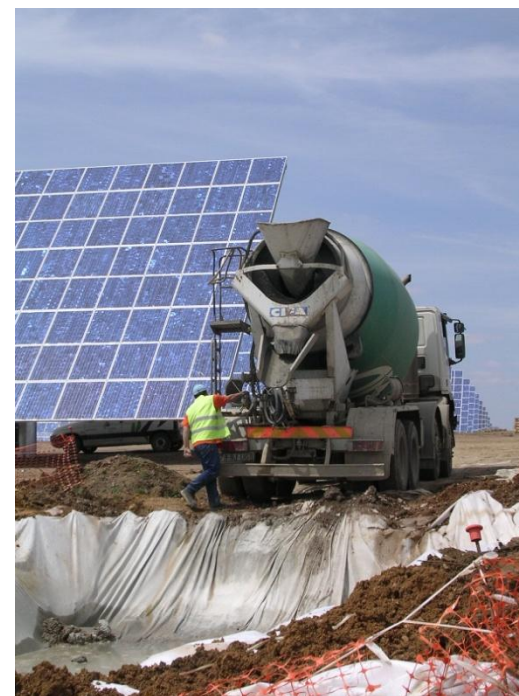
PRELIMINARY OVERVIEW OF OUR WORK

- Environmental Incident Studies at Catefica Wind Farm (Gamesa Energia);
- Environmental Incident Studies at Faião Wind Farm (Gamesa Energia);
- Environmental Incident Studies at Alto do Monção Wind Farm (Gamesa Energia);
- Environmental Incident Studies at Central de Biomassa Terras de Santa Maria (Central de Biomassa de Terras Santa Maria);
- Environmental Incident Study(EIS): Waveroller Peniche – Wave Energy Project(Eneólica Lda.);
- Environmental Impact Study(EIS)- Scoping Proposal of Martinchel Hydroelectric Use – Lote 1T (Soares da Costa Hydroenergia 1T, Lda.);
- Environmental Impact Study(EIS)- Scoping Proposal of Cascata do Zêzere Hydroelectric Usage– Lote 4T (Soares da Costa Hydroenergia 4T, Lda.);



ALGUNS TRABALHOS DESENVOLVIDOS

- Environmental Incident Study (EIS)- Scoping Proposal of Abrantes Hydroelectric Usage – Lote 8T (Soares da Costa Hidroenergia 8T, Lda.);
- Environmental Impact Study(EIS)- Scoping Proposal of Martinchel Hydroelectric Use – Lote 1T (Soares da Costa Hidroenergia 1T, Lda.);
- Environmental Monitoring site-work in Alto dos Forninhos wind farm - (Energetus, SA.);
- Environmental Monitoring in the Cogeneration Power Plant in Barreiro (Energetus, SA.);
- Environmental Monitoring site-work in Barroca Central Dam (Enersis);
- Environmental Monitoring site-work in Amareleja photovoltaic plant (Amper Central Solar, S.A.);
- Environmental Monitoring site-work-Construction of the National Highway– S. Miguel de Machede (Acoril).



ACREDITAÇÕES E AUTORIZAÇÕES PROFISSIONAIS

A TTerra has the following professional certifications and authorizations:

> **Direção-Geral do Emprego e das Relações de Trabalho (DGERT)**

- Certification training provider in the following areas of education and training:

- 851 – Environmental Technology Protection;
- 853 - Public Health Services;
- 862 - Health and Safety at Work.

(code and designation of certified areas, according to the National Classification of Areas of Education and Training).

ACREDITAÇÕES E AUTORIZAÇÕES PROFISSIONAIS

> Portuguese Geographic Institute(IGP)

-Previous statement registered with the nº. 27 131, according to the Decree-Law nº. 202/2007 of 25 May, which can be seen through this body site.

TTerra is eligible for the following domains:

- Thematic mapping of topographic base map;
 - Remote Sensing.
- Integrated Management Systems- Quality, Safety, Health and Environment for further certification.

TEAM & SKILLS

Our Team is composed of Certified Engineering Technicians, graduated in Environmental Engineering and Geological and Mining Engineering with the following educational background:

- PhD in hydrogeology and water life cycle analysis from Évora University;
- PhD program in Climate Change and Policy Research from Lisbon University and East Anglia University;
- Master in Environmental Engineering from Science and Technology Faculty, New University of Lisbon;
- Master in Geographic Information Systems, New University of Lisbon;
- Master in Applied Geology at the Faculty of Science of the University of Lisbon;
- Post-graduate in Sanitary Engineering from the Faculty of Science and Technology, New University of Lisbon;
- Postgraduate degree in Hydraulics and Water Resources from Superior Technical Institute, Technical University of Lisbon;
- Specialization in health and safety at work from Évora University;
- Dam Safety and Operation Course from Water Institute;
- Degrees in Civil Engineering, Environmental Engineering, Environmental Sciences, Geology and Landscape Architecture.